

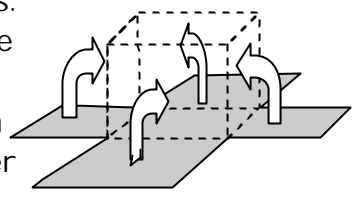
Card Packaging & Nets

Date _____

Most card packages are made up from flat 'Nets' which can be folded up to make three dimensional shapes. When doing a packaging project it is therefore important to learn about Nets and how they are constructed. This page is designed to help you with this.

What are Net Designs

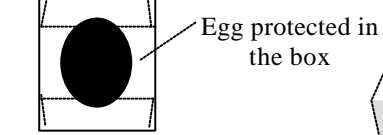
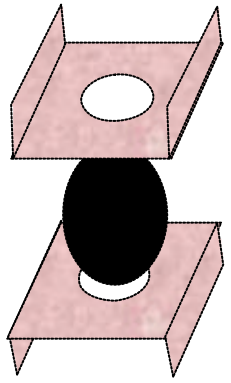
Nets are flat shapes which can be folded into functional packages. If you imagine how a cardboard box is folded up to form all the sides you can see exactly how nets work. Nets can however, become very complex. An example of this is an Easter egg box which includes windows and all sorts of clever shaping to attract attention.



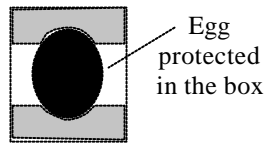
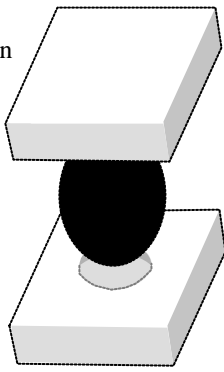
Cardboard box

Design, Protection & Construction

Producing a net shape is only the first step in designing a package. They have to be strong and protect the product inside. Here are a few examples of how to protect an egg:

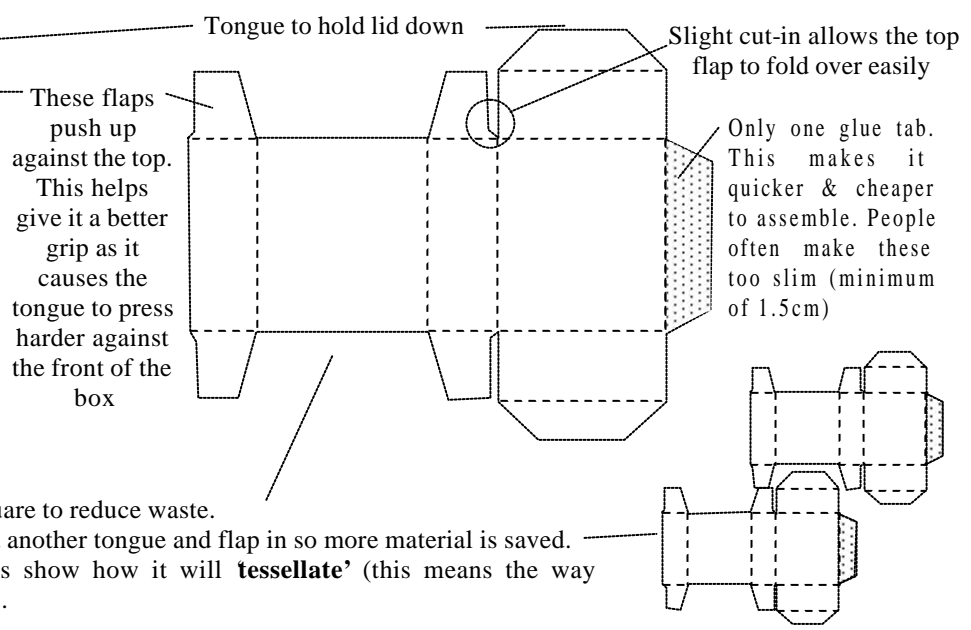


This is a common method which 'suspends' the egg in the box. The box will get damaged before the egg does



Expanded polystyrene blocks offer a softer cushion for the egg to rest on

If we look at the construction of this simple panel pin box it is clear to see that the net has been worked out quite cleverly.



The design is kept quite square to reduce waste. Also this inside area will fit another tongue and flap in so more material is saved. These reduced illustrations show how it will **tessellate** (this means the way shapes lock into each other).

Ext: do some detective work – look at a package of your choice and try to discover the function of each feature. Use notes and sketches.